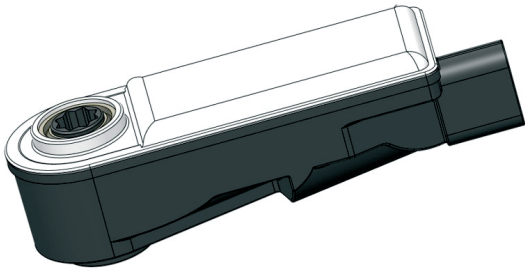


Slim Rotary Actuator



Product Highlights



Typical Applications

Automotive, Industrial, Automation

Small

Small Size: 104 x 37 x 34 mm

Low Weight: 113.5 g

Strong

Torque: 1.5 Nm

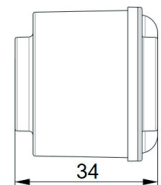
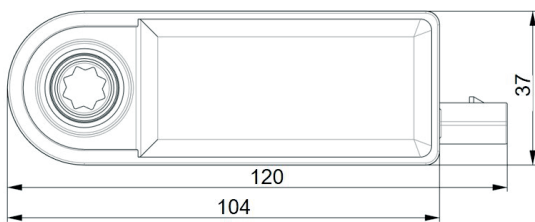
Robust

IP protection: IP69K

Benefit

Compact Design, High Torque

Technical Data



Motor Type: Brushed DC

Weight: 113.5 g

Voltage Range: 9 ~ 16 V

Max. Current: 2 A

Temperature Range: -40° ~ +85°C

Load Torque (at 20°C and 12 V): 1.5 Nm

Rot. Speed (at 20°C, 12 V and 1.5 Nm): 8 RPM

Hall sensor for closed loop operation

Torque-Speed Characteristic

