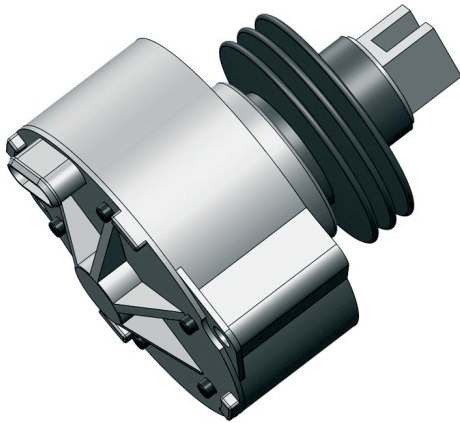


Linear Stepper Actuator



Product Highlights



Typical Applications

Automotive, Industrial, Automation

Fast and strong

Speed: 30 mm/s

Force: > 40 N

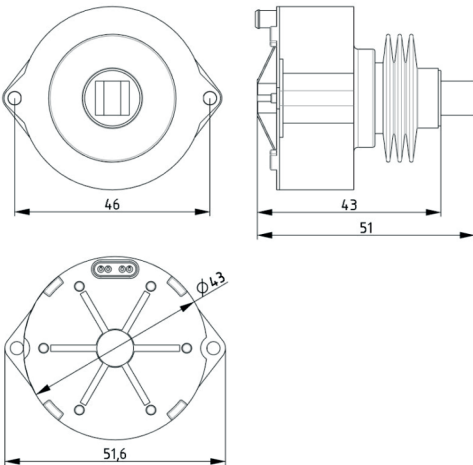
Robust

IP protection: IP69K

Benefit

Low Noise, High Speed, High Force

Technical Data



Motor Type: 2 phase stepper motor

Weight: 65 g

Voltage Range: 9 ~ 16 V

Max. Current: 1.2 A

Temperature Range: -40° ~ +95°C

Force (at 20°C, 12 V, 0.8 A): > 40 N

Speed (at 20°C, 12 V, 0.8 A): > 30 mm/s

Measurement at 20°C, 12 V, 0.8 A, loaded with 32 N

